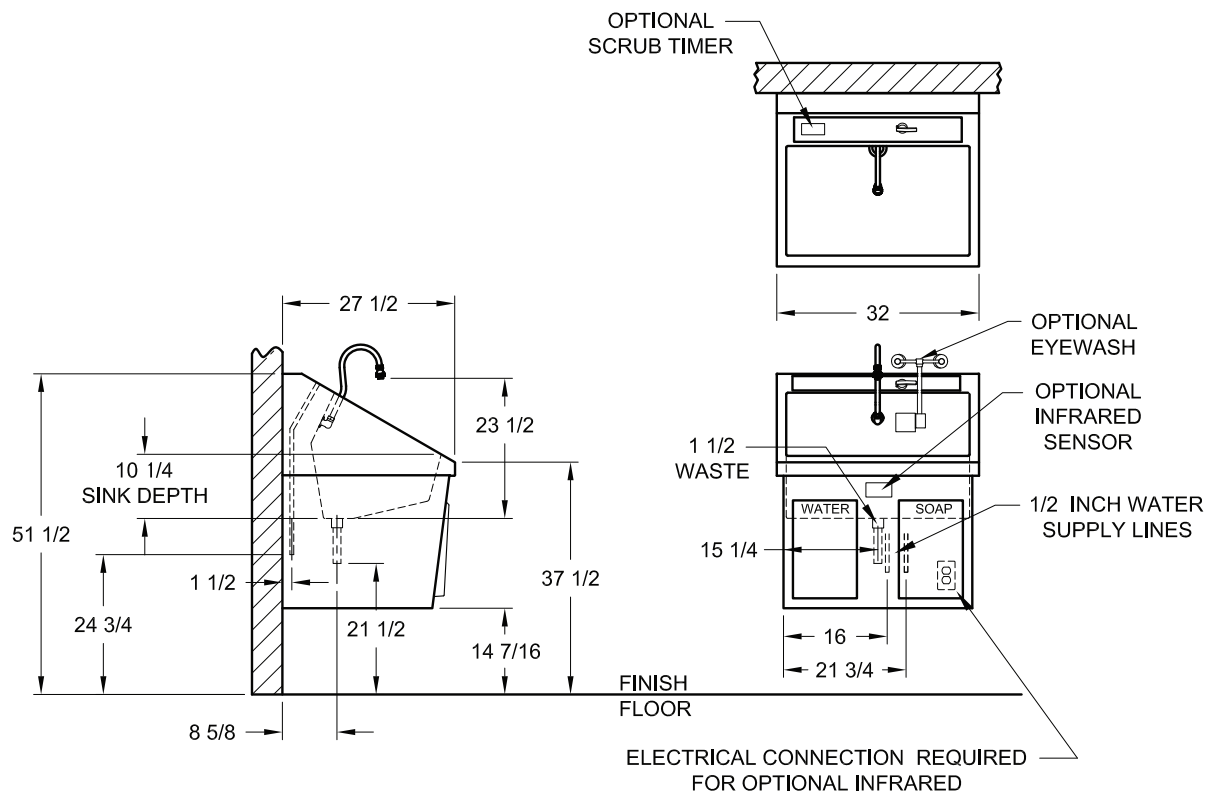


Surgical Scrub Sinks

Model # FHCSS32 (Single Station)

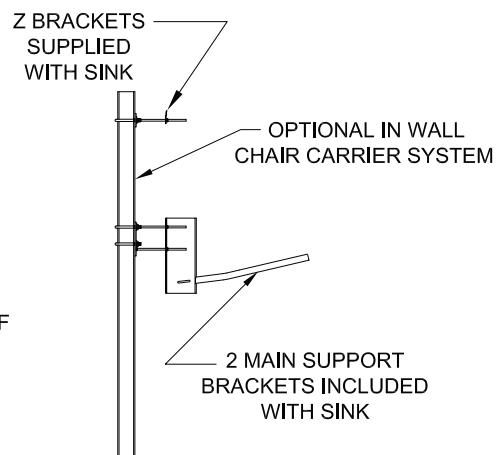


DIMENSIONS



NOTES:

1. MATERIAL:
 - SINK BASIN; 14 GAUGE 304 STAINLESS STEEL
 - SINK SKIRT; 16 GAUGE 304 STAINLESS STEEL
2. ALL PLUMBING 1/2" COPPER OR BRASS PIPE. THE SINK WILL BE FURNISHED WITH IN LINE CHECK VALVES ON SUPPLY LINES.
3. UTILITY REQUIREMENT
 - COLD WATER 20 TO 50 PSIG 70 DEG F MAX
 - HOT WATER 20 TO 50 PSIG 120 DEG F TO 140 DEG F
4. POWER REQUIREMENTS (FOR SENSOR OPERATIONS)
 - 120 VAC, 60 Hz, SINGLE PHASE, 3.0 AMP OR
 - 220 VAC, 60 Hz, SINGLE PHASE, 1.5 AMP.
 - INSTALLED PER LOCAL BUILDING CODES.
5. NET WEIGHT OF SINK 130 LB.



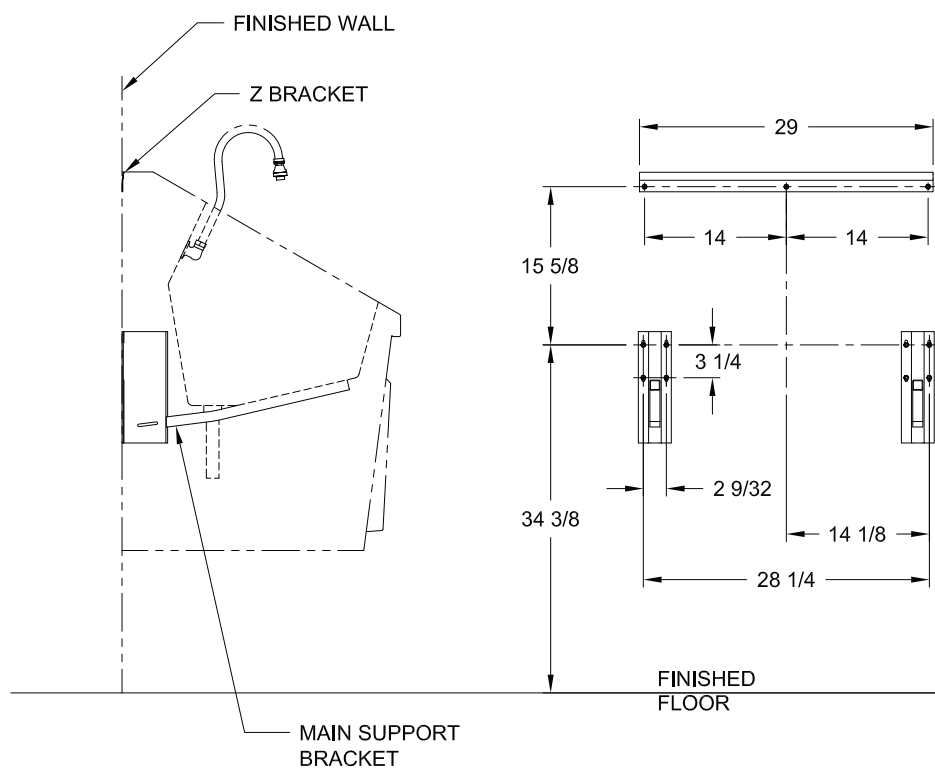
Surgical Scrub Sinks

Model # FHCSS32 (Single Station)



**FUTURE
HEALTH**
CONCEPTS

DIMENSIONS

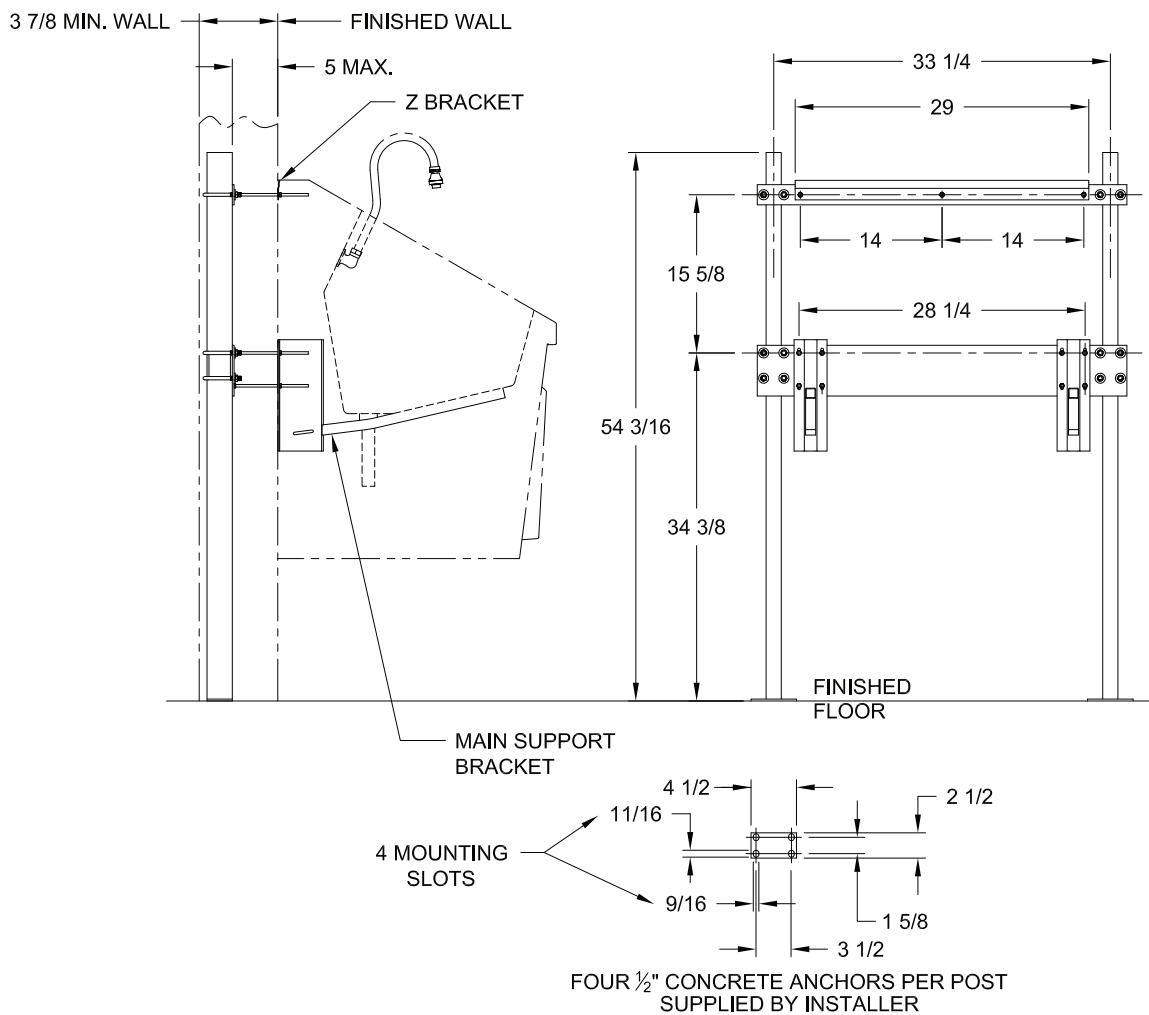


Surgical Scrub Sinks

Model # FHCSS32 (Single Station)



DIMENSIONS

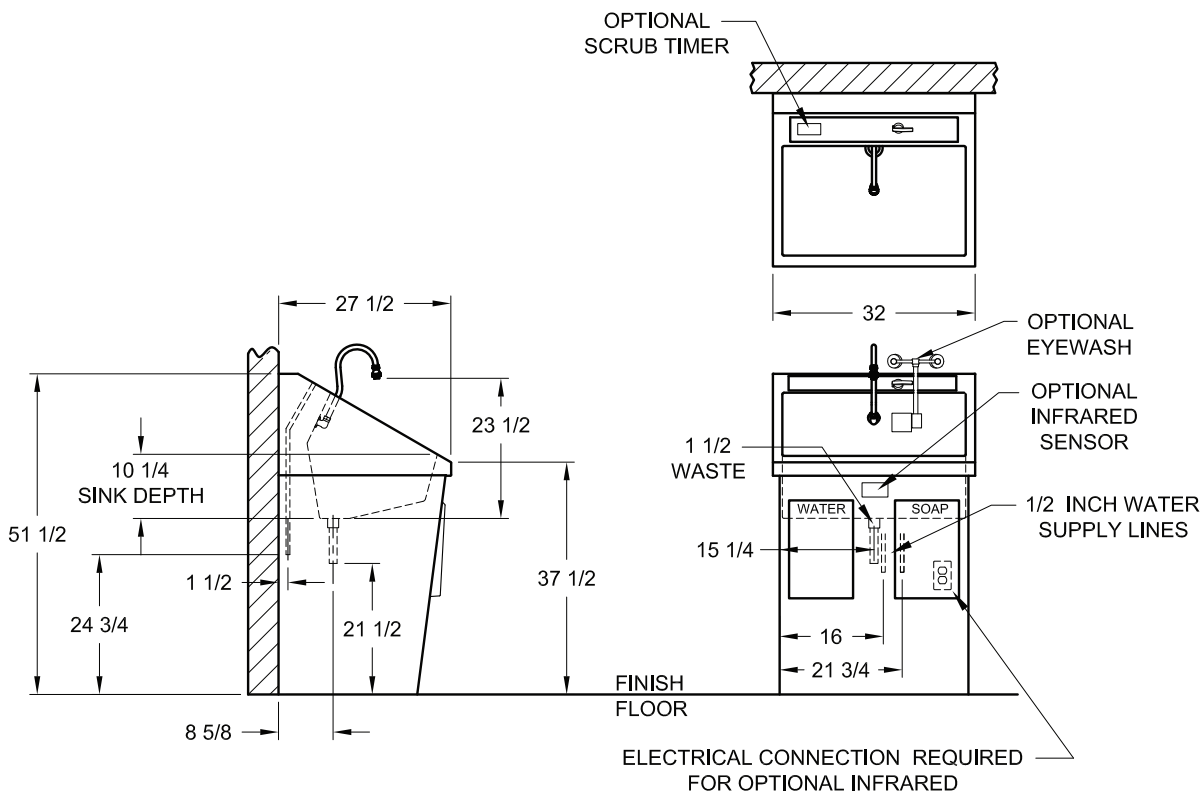


Surgical Scrub Sinks

Model # FHCSS32 (Single Station)



DIMENSIONS



NOTES:

- MATERIAL:**
 - SINK BASIN; 14 GAUGE 304 STAINLESS STEEL
 - SINK SKIRT; 16 GAUGE 304 STAINLESS STEEL
- ALL PLUMBING 1/2" COPPER OR BRASS PIPE.**
THE SINK WILL BE FURNISHED WITH IN LINE CHECK VALVES ON SUPPLY LINES.
- UTILITY REQUIREMENT**
 - COLD WATER 20 TO 50 PSIG 70 DEG F MAX
 - HOT WATER 20 TO 50 PSIG 120 DEG F TO 140 DEG F
- POWER REQUIREMENTS (FOR SENSOR OPERATIONS)**
 - 120 VAC, 60 Hz, SINGLE PHASE, 3.0 AMP OR
 - 220 VAC, 60 Hz, SINGLE PHASE, 1.5 AMP.
 - INSTALLED PER LOCAL BUILDING CODES.

Future Health Concept Inc.
Publication No. SPEC-FHCSS32

Information regarding this product is
subject to change without prior notice